

Liliana Dunare, teacher

Recycling is the process by which waste is transformed into new materials and objects. Its aim is to reuse existing materials instead of creating new ones, in a sustainable and economical way.

In our school, on different occasions and holidays, workshops are organized in which objects are made from recyclable materials.

The purpose of the activities is to encourage the recycling and reuse of waste and the acquisition of a behavior that supports ecological balance. In addition to training skills, they learned the efficiency of waste recovery through original and creative works.

The objectives we pursue when carrying out activities with recyclable materials are:

- training students in collecting materials
- training students by reusing these materials
- encouraging students to take part in an ecological activity where they can perform different practical activities from the collected materials
- developing interest in taking part in practical activities with recyclable materials.

Workshop activities ended with exhibitions or even celebrations. The students from different specializations made decorative Christmas objects, masks, clothing products.

The decorations were made of textile materials, cardboard wire supports, fir cones, polystyrene scraps, jars and others. The masks made were also used at the Christmas celebration in our School in a mask parade.

2.4.1. Design elements 10th grade

Domain: textile and leather industry vocational education

Liliana Dunare, teacher

THE SKETCH

- ❖ The word “sketch” is originated from French (croquis) and it means a fast drawing which renders in a few lines the main features of a figure, of an object, of a landscape.
- ❖ The Sketch is a fast drawing which renders in a few lines the main features of a figure.
- ❖ A Sketch captures the essence of the subject, the shape, the volume, the movement and the emotion. The Sketch may include the suggestion of light and shadow.
- ❖ The Sketch isn't a detailed drawing, it helps the artist change their ideas.

Classification of sketches

According to the source of inspiration, sketches are classified into:

- drawing according to nature;
- the sketch from the imagination.

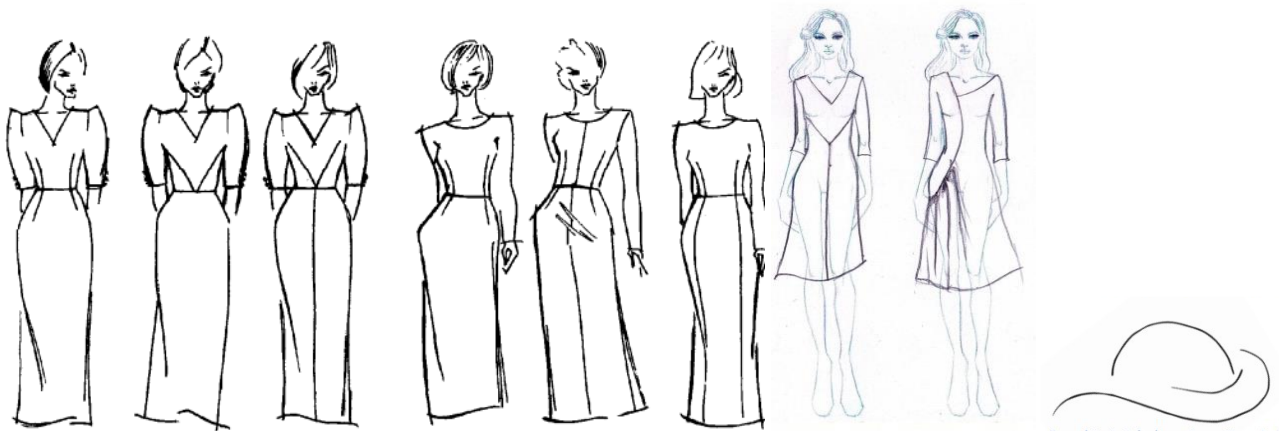
The sketch by nature is made according to different objects and shapes such as: clothing, shoes, period costumes, accessories, ornaments and others. They are drawn with thin lines, highlighting the shapes that the eye perceives upon first contact with the object.

The sketch from the imagination is a summary composition that includes ideas, conceptions, feelings and own options.

HUMAN SKETCHES



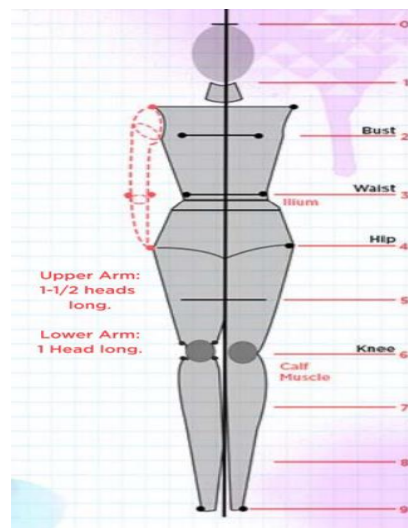
CLOTHING SKETCHES



HUMAN SKETCH

Drawing the human sketch, used to make fashion sketches, requires going through some stages. To make the sketch, it must start from respecting the proportions of the human body vertically and horizontally.

Some designers recommend drawing human sketches based on the idea that the height of the body is 9 times the height of the head.



APPLICATIONS

The stages of drawing the human sketch are:

1. We choose a value for the height of the head and draw it vertically 9 times. The sketch rendered with 9 times the height of the head is more elongated.
2. We draw the axis of vertical symmetry, to be able to render the proportions of the body horizontally/widthwise. The height of the neck is $\frac{1}{2}$ of the height of the head.
3. We draw the shoulders, which have a width of $1 \div 1.5$ the height of the head
4. We draw the waist line, its width representing $\frac{3}{4}$ of the height of the head.
5. We draw the sketch/slit line and the knees. The width of the hips is equal to the width of the shoulders. Draw the hands, their length, without the palm, positioning themselves up to the level of the hip line. Palm length is the distance between the hip line and the 5th line.
6. We draw the calves of the legs, using curved lines.
7. We finalize the drawing of the hands.
8. We draw the sole of the foot, their height being $\frac{3}{4}$ of the height of the head, between lines 8 and
9. The final outline of the sketch is drawn.

